

THE PALLISER



FEATURES :

1804 sqft. 3-Storey

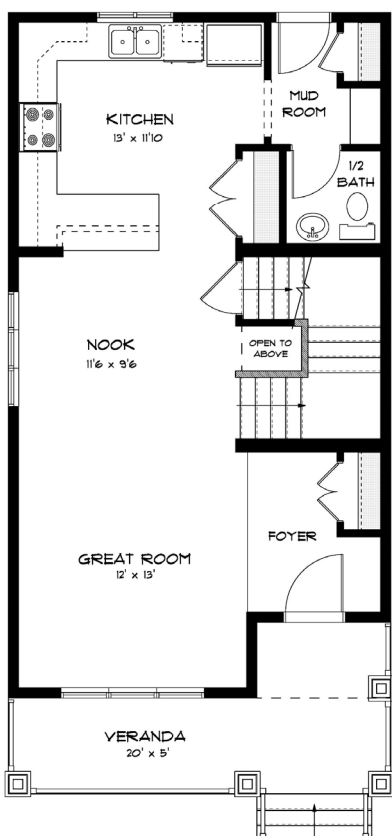
4 Bedroom / 3.5 Bath

Large Wrap-Around
Kitchen with Eat-Up Bar

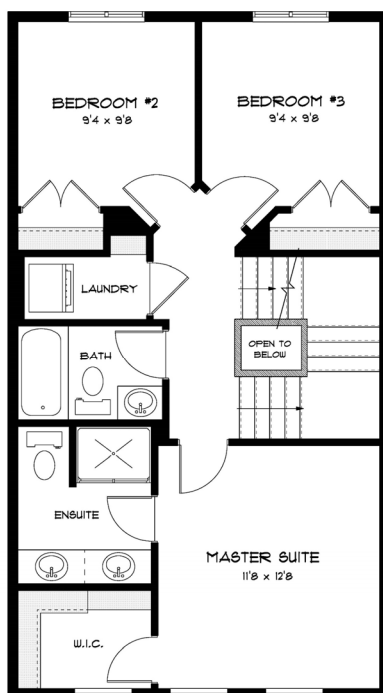
Spacious and Inviting
Full Width Veranda

Third Floor includes Loft,
Bedroom & 3pc. Bath

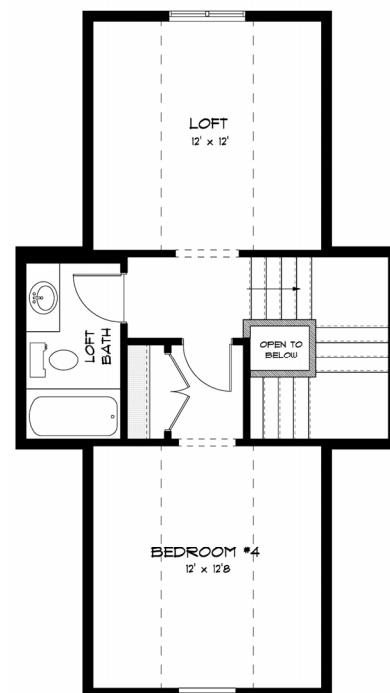
TOTAL : 1804 SQFT.



**MAIN FLOOR :
692 SQFT.**



**UPPER FLOOR :
646 SQFT.**



**THIRD FLOOR :
466 SQFT.**

CONTACT :

Jim Crawford
Ph# : (403) 993-0350
jim@timbercreekhomes.ca

MAIN OFFICE :

Bay #2, 2807 – 107th Ave. S.E.
Calgary, Alberta, T2Z 4M2

WEBSITE : www.timbercreekhomes.ca